

The Worship Chair®

We are pleased to introduce this unique design, offering comfort, durability, and affordability in a beautiful design!

The Worship Chair is the popular choice for churches nationwide! The #1 Chair offers continuous seating, in the same look as traditional church pews, but with a contemporary, comfortable setting. You can actually sit in between two chairs if you want! The back features a lumbar support for added comfort, a top "caprail" system similar to what you find on a church pew, so congregants can comfortably hold onto the chair in front while standing. T-Nut construction adds strength, holding up to 1600 pounds per seat, and commercial grade polyolefin fabrics are durable and very stain resistant!

Ask about new colors, too!



Inside The Worship Chair you will find real 1/2" plywood (not particleboard or osb). The cushioned seat comes with 3" of virgin polyurethane foam, contoured with a waterfall front edge for comfort under the knees. Silver Vein or Gold Vein PowderCoat Frame finishes.

In Stock for Fast Delivery



Great Prices - Fast Delivery!

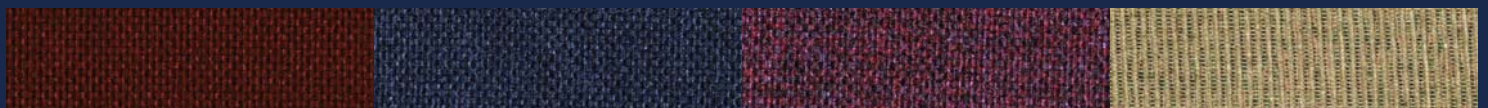


Benefits of The Worship Chair

Features:

- Comfort and Durability
- Affordable Pricing!
- 3" Thick Seat Cushion
- Lumbar Support Back
- Load tested to over 1600 pounds
- 1" Steel square tube frames
- 21" wide seat at ganging device
- 1/2" Plywood seat and back core
- Free Underseat Bookrack
- Free Communion Cup Holder
- Free Ganging Devices
- Stain Resistant Polyolefin Fabric

Stacks Up to 12 high - Connects to Make Rows!



Maroon - Silver Vein

Navy - Silver Vein

Grape - Silver Vein

Mixed Tan - Gold Vein

WorshipChairs.com 1-800-383-5903